



PEGASUS II

 2  2  2 1478 Sq Ft



MODEL FEATURES

SOLSTICE AT TOWER RANCH

Our largest open concept floor plan features 12' ceilings, a beautiful kitchen made for entertaining, and ample storage space. The dining room leads to a spacious deck with full sun exposure - the perfect place to enjoy a glass of wine and take in Kelowna's city, lake and mountain views.

- Walk-out rancher style
- One-floor living
- 2 Bedrooms, 2 full bathrooms
- Soaring 12' ceilings in main area
- Open concept kitchen/living/dining area
- Large pantry
- Main floor laundry room
- 2 Car garage
- Spacious master bedroom with ensuite
- Energuide 80 rated
- Optional finished bright walk-out basement

Parkbridge

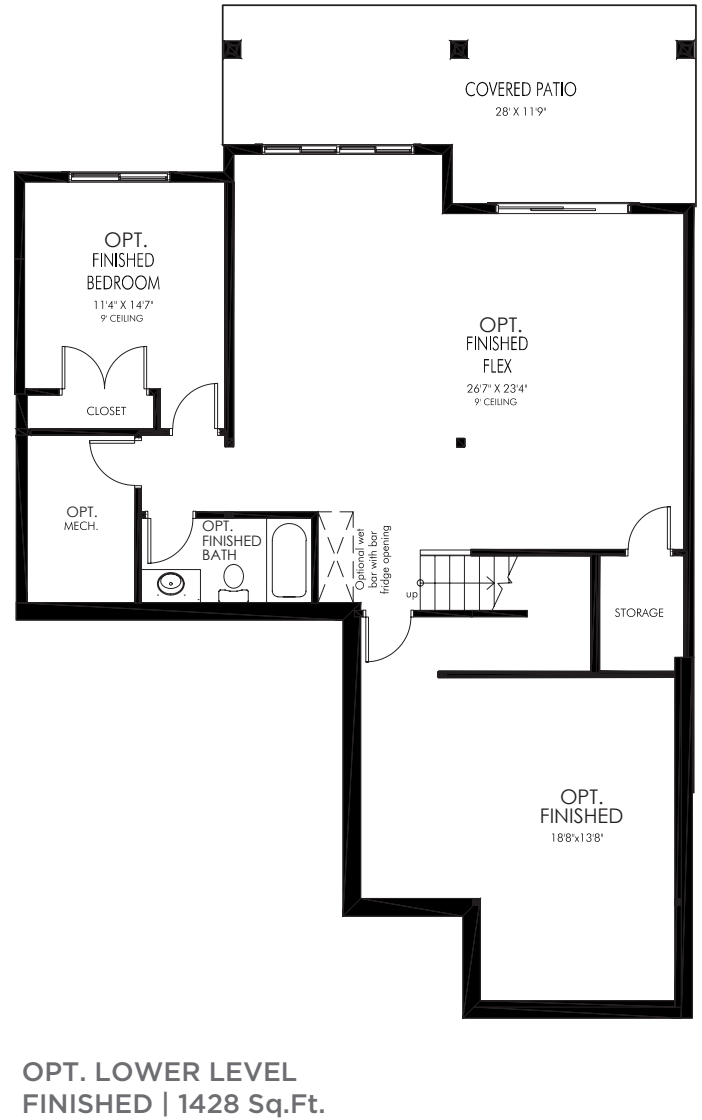
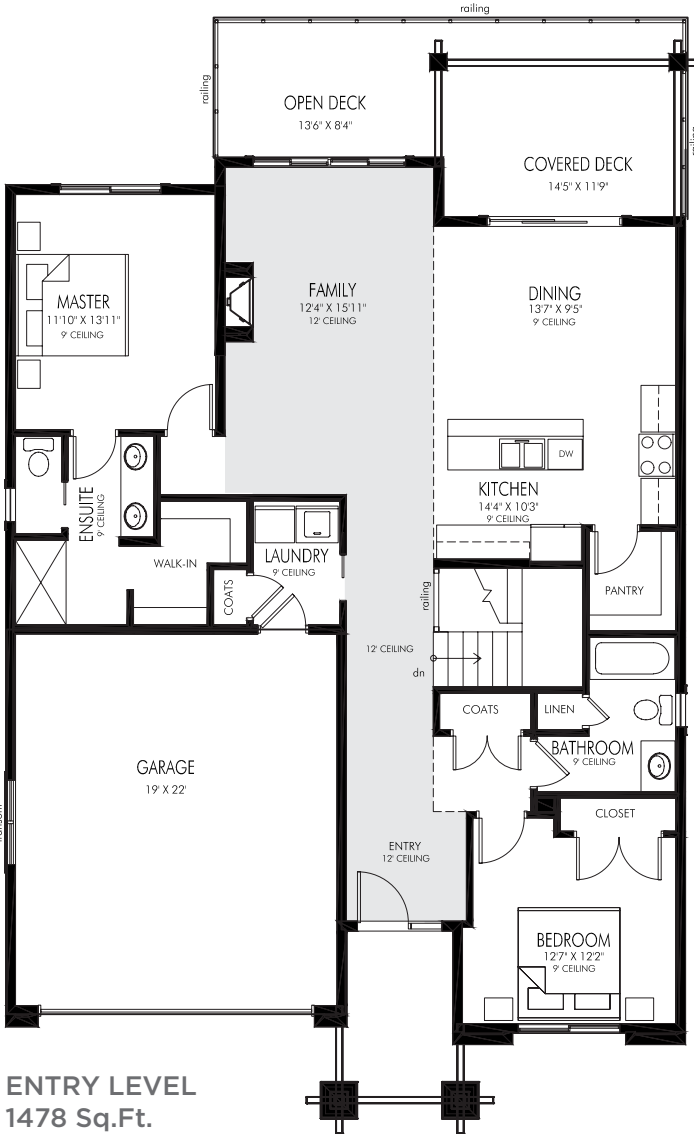
Sales Centre
250-491-3353

Tower Ranch Drive
Kelowna, BC
info@solsticetowerranch.com

SolsticeTowerRanch.com

PEGASUS II

 2
  2
  2
 1478 Sq Ft



Parkbridge Lifestyle Inc. makes no warranty or representation, expressed or implied, concerning the accuracy or completeness of the information contained within. This is not an offer to sell, nor an offer to buy, to residents of any province or state in which registration or other legal requirements have not been fulfilled. Features, amenities and floorplan specifications represent the builder's current concepts and plans and are subject to change without notice. Substitution of materials shall be of equal or greater value. Actual usable floor space may vary from stated floor area. E.&O.E.