



# PHOENIX

 3  2  2 1538 Sq Ft



## MODEL FEATURES

### SOLSTICE AT TOWER RANCH

This sprawling open concept home is a great solution for those looking for a modern bungalow. 12' ceilings provide an airy and spacious environment, while extra wide hallways and plenty of windows promote a bright and comfortable interior.

- Large open concept kitchen/living/dining area
- Spacious private master bedroom and ensuite with large walk-in closet
- 3 Bedrooms and 2 full bathrooms
- 4.5' heated crawl space, ideal for storage
- Large outdoor concrete patio, perfect for entertaining
- Attached 2 car garage
- Energuide 80 rated

**Parkbridge**

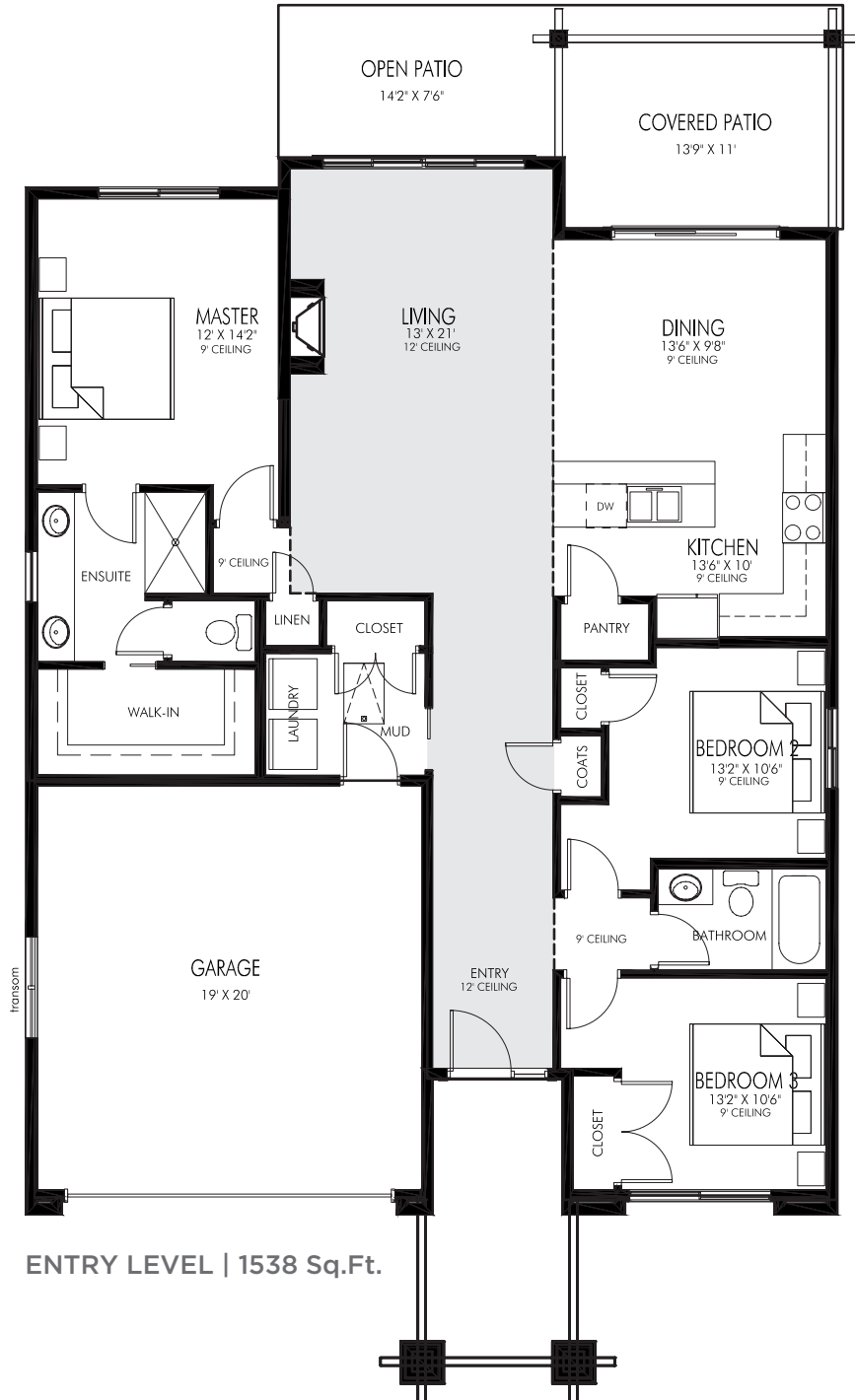
**Sales Centre**  
250-491-3353

Tower Ranch Drive  
Kelowna, BC  
[info@solsticetowerranch.com](mailto:info@solsticetowerranch.com)

[SolsticeTowerRanch.com](http://SolsticeTowerRanch.com)

# PHOENIX

3 2 2 1538 Sq Ft



ENTRY LEVEL | 1538 Sq.Ft.

Parkbridge Lifestyle Inc. makes no warranty or representation, expressed or implied, concerning the accuracy or completeness of the information contained within. This is not an offer to sell, nor an offer to buy, to residents of any province or state in which registration or other legal requirements have not been fulfilled. Features, amenities and floorplan specifications represent the builder's current concepts and plans and are subject to change without notice. Substitution of materials shall be of equal or greater value. Actual usable floor space may vary from stated floor area. E.&O.E.