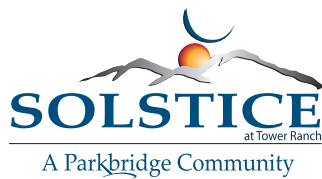




Artist's Rendering Only

# HALO

 3  3  2 **1771 Sq Ft**



## MODEL FEATURES

### SOLSTICE AT TOWER RANCH

Featuring an oversize garage and rough-in for future lift with access from the garage, this walk-up home focuses on plenty of space and storage. A great home for entertaining; make the flex space yours with a den or a home office!

- 3 Bedrooms, 3 full Bathrooms
- 9' ceilings throughout upper and lower levels
- Open concept kitchen/living/dining area
- Partially covered concrete patio off dining area
- Covered front deck space
- Main floor laundry room
- Extra deep double car garage
- Master bedroom with ensuite
- Energuide 80 rated
- Both levels completely finished

**Parkbridge**

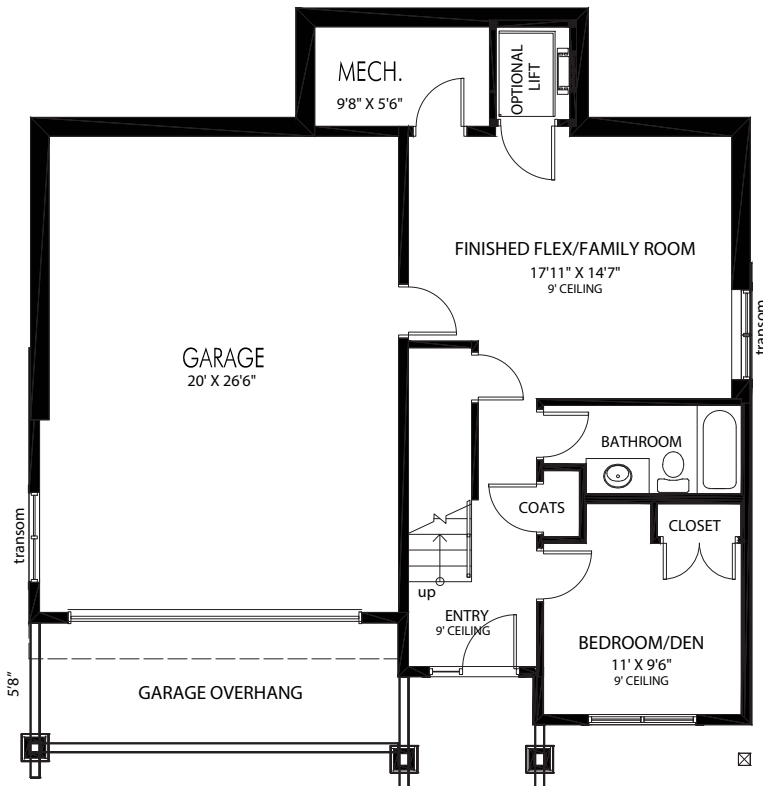
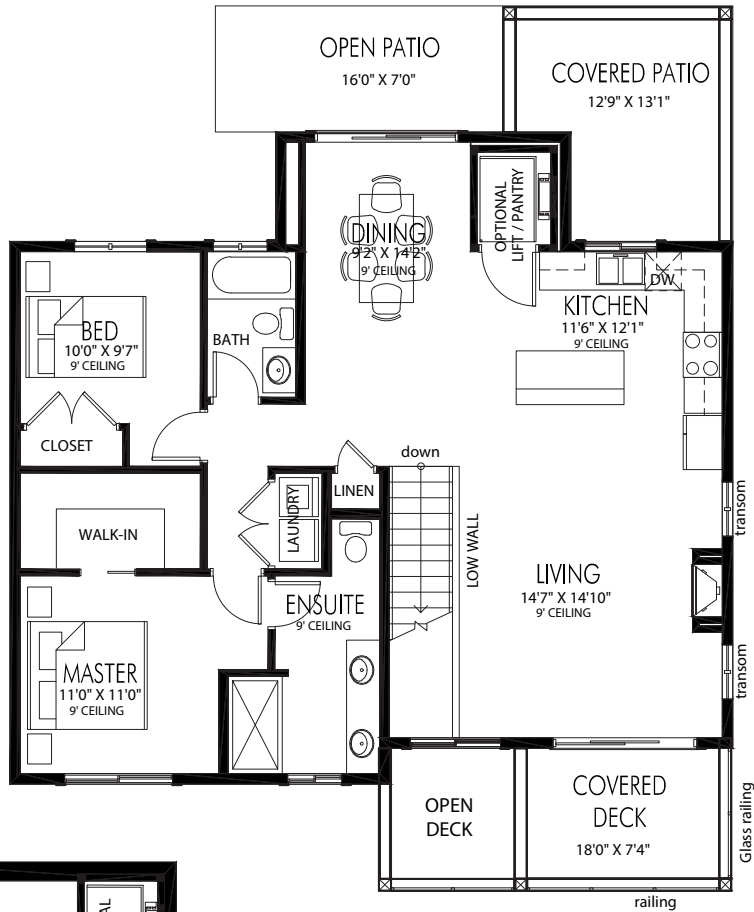
**Sales Centre**  
250-491-3353

Tower Ranch Drive  
Kelowna, BC  
info@solsticetowerranch.com  
**SolsticeTowerRanch.com**

# HALO

3 3 2 1771 Sq Ft

## UPPER LEVEL 1146 Sq.Ft.



## ENTRY LEVEL 625 Sq.Ft.