

# Halo

3 Bedrooms • 3 Bathrooms  
1,833 Sq. Ft.



With three spacious bedrooms to enjoy, Halo has space to share with all of your guests. A patio and a deck offer breathtaking views of the surrounding Valley.



1631 Summer Crescent Kelowna, BC V1P 1T2  
SolsticeSales@parkbridge.com  
250-491-3353

**SolsticeTowerRanch.com**

**pma**brethour  
PMA BRETHOUR REALTY GROUP BROKERAGE

Parkbridge Lifestyle Inc. makes no warranty or representation, expressed or implied, concerning the accuracy or completeness of the information contained within. This is not an offer to sell, nor an offer to buy, to residents of any province or state in which registration or other legal requirements have not been fulfilled. Features, amenities and floorplan specifications represent the builder's current concepts and plans and are subject to change without notice. Substitution of materials shall be of equal or greater value. Actual usable floor space may vary from stated floor area. E. & O. E.

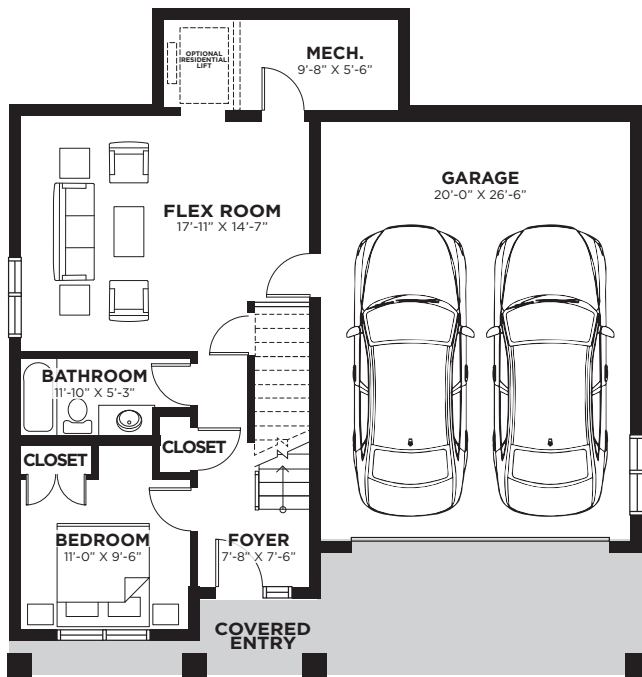
2022.10.01

# Halo

3 Bedrooms • 3 Bathrooms  
1,833 Sq. Ft.

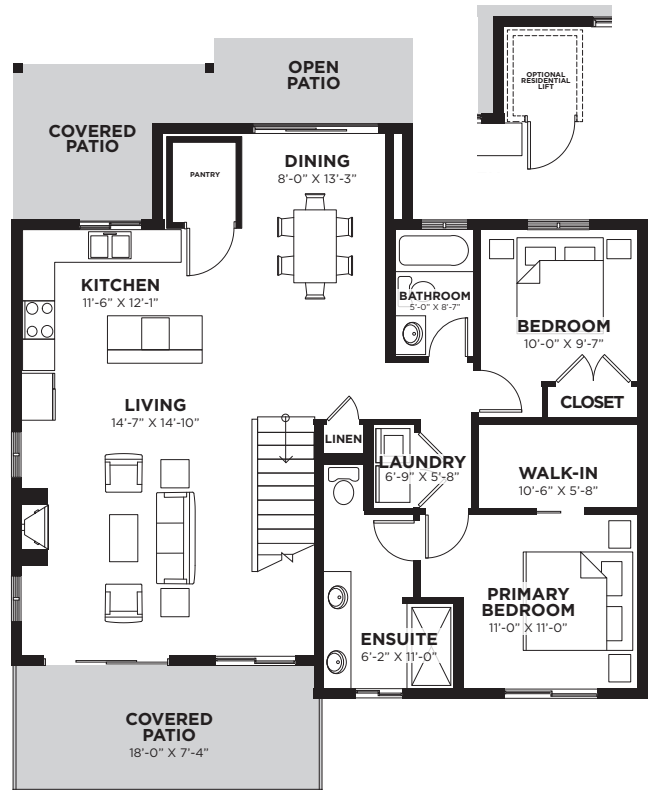
## ENTRY LEVEL

Total floorspace 625 Sq. Ft.  
Garage 577 Sq. Ft.



## UPPER LEVEL

Total floorspace 1,208 Sq. Ft.



Parkbridge Lifestyle Inc. makes no warranty or representation, expressed or implied, concerning the accuracy or completeness of the information contained within. This is not an offer to sell, nor an offer to buy, to residents of any province or state in which registration or other legal requirements have not been fulfilled. Features, amenities and floorplan specifications represent the builder's current concepts and plans and are subject to change without notice. Substitution of materials shall be of equal or greater value. Actual usable floor space may vary from stated floor area. E. & O. E.



# Leo II

VERSION A

2 Bedrooms • 2.5 Bathrooms  
1,861 Sq. Ft.



A compact bungalow, Leo is the perfect low-maintenance home to relax and enjoy. With a beautiful patio and a finished basement providing a guest suite and/or rec room, the opportunities are limitless.



1631 Summer Crescent Kelowna, BC V1P 1T2  
SolsticeSales@parkbridge.com  
250-491-3353

**SolsticeTowerRanch.com**



Parkbridge Lifestyle Inc. makes no warranty or representation, expressed or implied, concerning the accuracy or completeness of the information contained within. This is not an offer to sell, nor an offer to buy, to residents of any province or state in which registration or other legal requirements have not been fulfilled. Features, amenities and floorplan specifications represent the builder's current concepts and plans and are subject to change without notice. Substitution of materials shall be of equal or greater value. Actual usable floor space may vary from stated floor area. E. & O. E.

2022.10.26

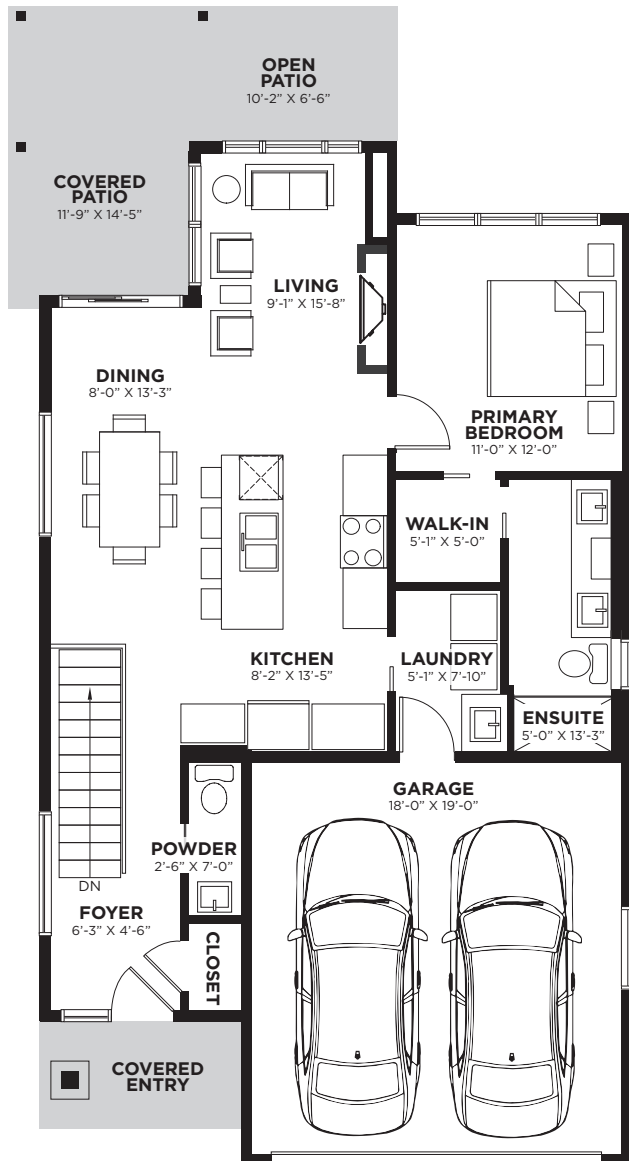
# Leo II

VERSION A

2 Bedrooms • 2.5 Bathrooms  
1,861 Sq. Ft.

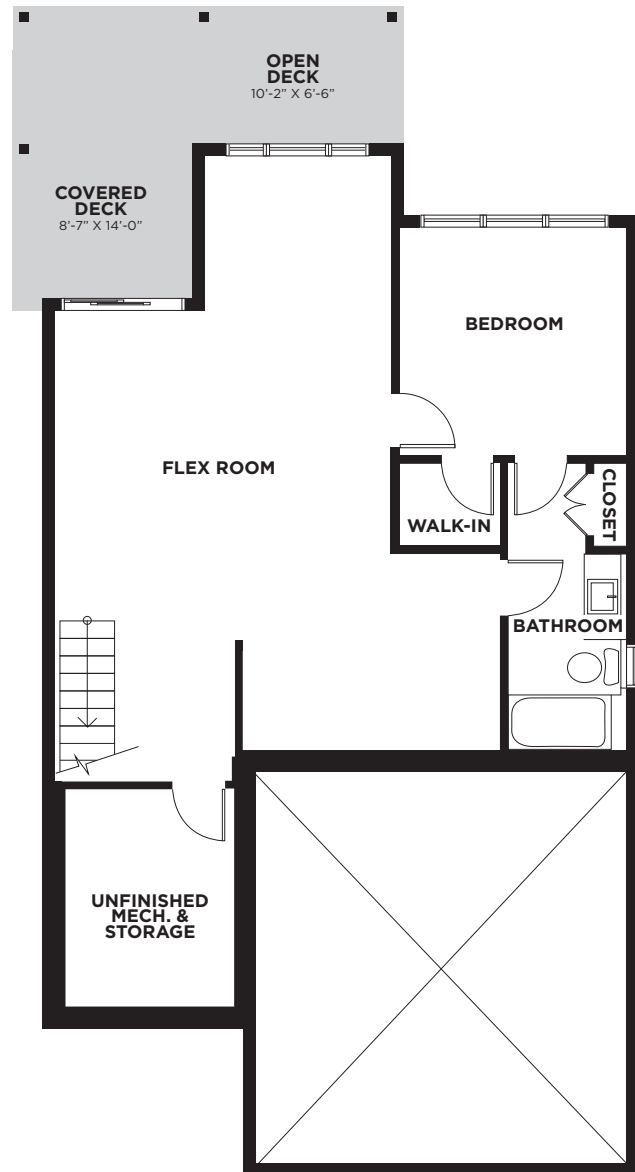
## ENTRY LEVEL

Total floorspace 887 Sq. Ft.  
Garage 383 Sq. Ft.



## LOWER LEVEL

Total floorspace 974 Sq. Ft.  
Finished basement



Parkbridge Lifestyle Inc. makes no warranty or representation, expressed or implied, concerning the accuracy or completeness of the information contained within. This is not an offer to sell, nor an offer to buy, to residents of any province or state in which registration or other legal requirements have not been fulfilled. Features, amenities and floorplan specifications represent the builder's current concepts and plans and are subject to change without notice. Substitution of materials shall be of equal or greater value. Actual usable floor space may vary from stated floor area. E. & O. E.



# Leo II

VERSION B

2 Bedrooms • 2.5 Bathrooms  
1,849 Sq. Ft.



A compact bungalow, Leo is the perfect low-maintenance home to relax and enjoy. With a beautiful patio and a finished basement providing a guest suite and/or rec room, the opportunities are limitless.



1631 Summer Crescent Kelowna, BC V1P 1T2  
SolsticeSales@parkbridge.com  
250-491-3353

**SolsticeTowerRanch.com**



Parkbridge Lifestyle Inc. makes no warranty or representation, expressed or implied, concerning the accuracy or completeness of the information contained within. This is not an offer to sell, nor an offer to buy, to residents of any province or state in which registration or other legal requirements have not been fulfilled. Features, amenities and floorplan specifications represent the builder's current concepts and plans and are subject to change without notice. Substitution of materials shall be of equal or greater value. Actual usable floor space may vary from stated floor area. E. & O. E.

2022.10.26

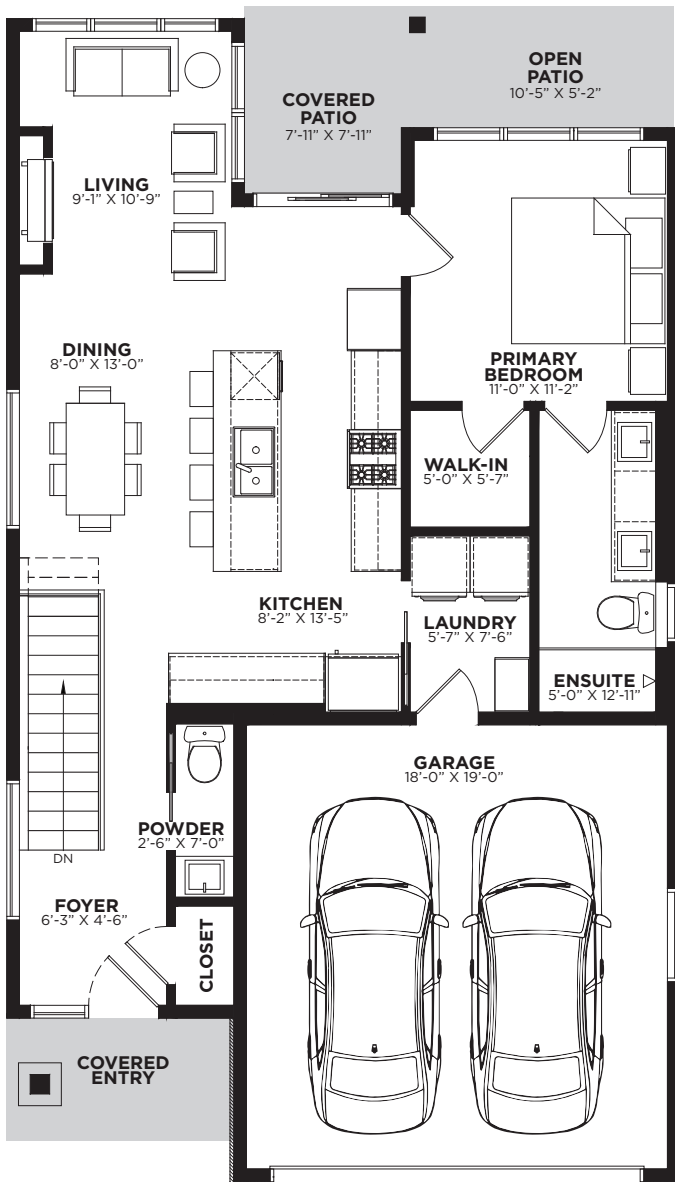
# Leo II

VERSION B

2 Bedrooms • 2.5 Bathrooms  
1,849 Sq. Ft.

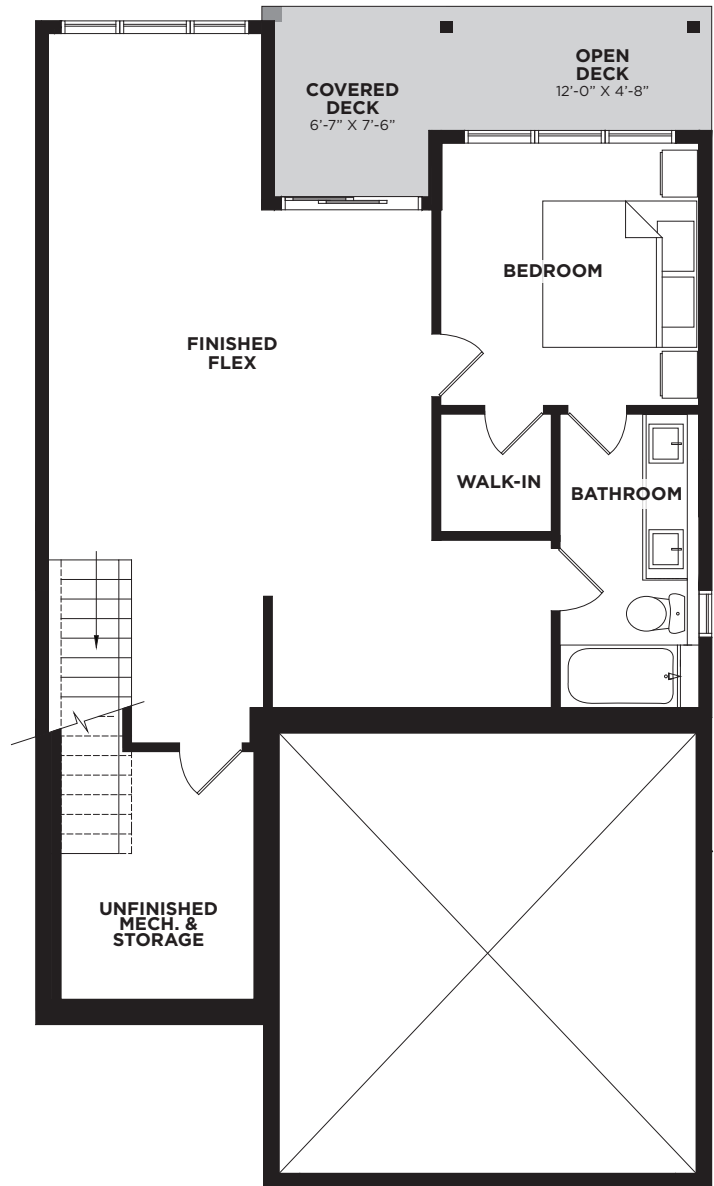
## ENTRY LEVEL

Total floorspace 875 Sq. Ft.  
Garage 383 Sq. Ft.



## LOWER LEVEL

Total floorspace 974 Sq. Ft.  
Finished basement



Parkbridge Lifestyle Inc. makes no warranty or representation, expressed or implied, concerning the accuracy or completeness of the information contained within. This is not an offer to sell, nor an offer to buy, to residents of any province or state in which registration or other legal requirements have not been fulfilled. Features, amenities and floorplan specifications represent the builder's current concepts and plans and are subject to change without notice. Substitution of materials shall be of equal or greater value. Actual usable floor space may vary from stated floor area. E. & O. E.

2022.10.26

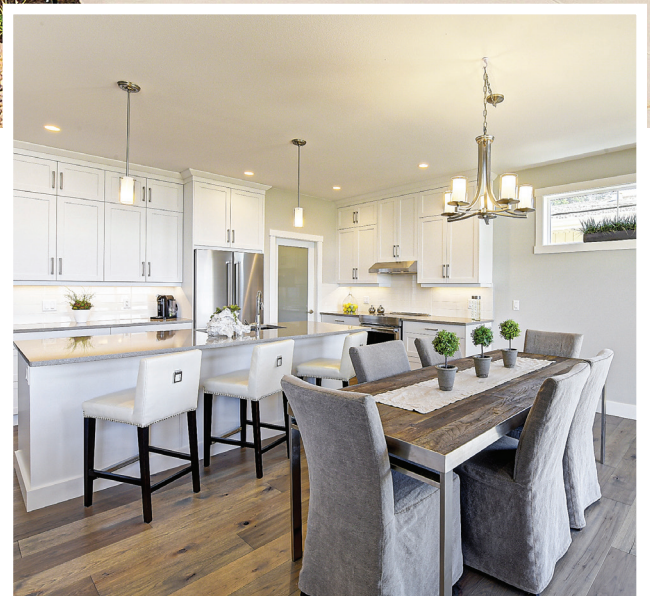


# Pegasus II

3 Bedrooms • 3 Bathrooms  
2,906 Sq. Ft.



An open concept kitchen, living, and dining room is the perfect place to live, entertain, and relax. Pegasus also offers a finished basement, flexroom with direct access to the private patio.



1631 Summer Crescent Kelowna, BC V1P 1T2  
SolsticeSales@parkbridge.com  
250-491-3353  
**SolsticeTowerRanch.com**

**pma brethour**  
PMA BRETHOUR REALTY GROUP BROKERAGE

Parkbridge Lifestyle Inc. makes no warranty or representation, expressed or implied, concerning the accuracy or completeness of the information contained within. This is not an offer to sell, nor an offer to buy, to residents of any province or state in which registration or other legal requirements have not been fulfilled. Features, amenities and floorplan specifications represent the builder's current concepts and plans and are subject to change without notice. Substitution of materials shall be of equal or greater value. Actual usable floor space may vary from stated floor area. E. & O. E.

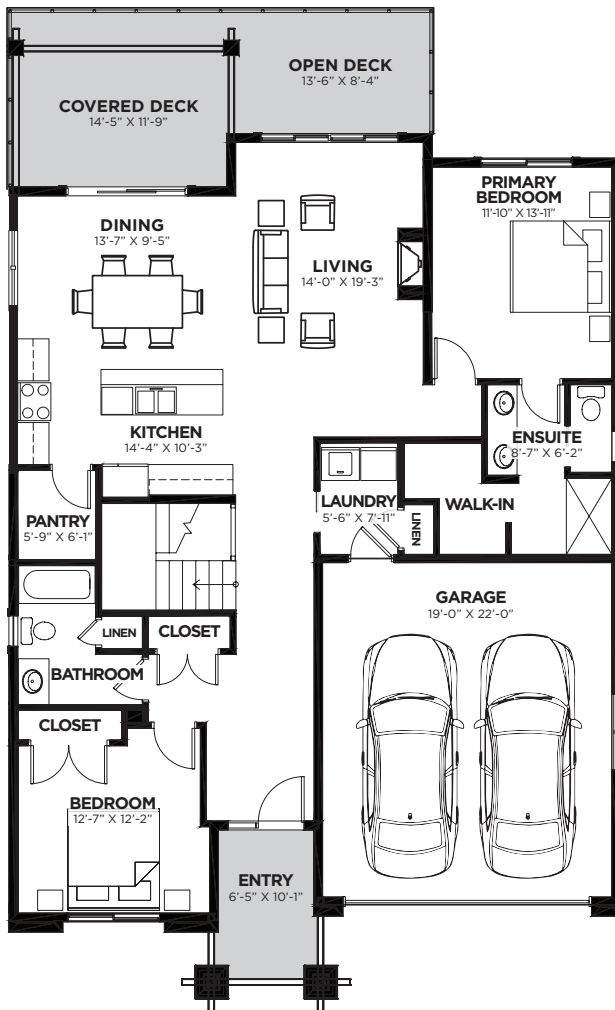
2022.10.26

# Pegasus II

3 Bedrooms • 3 Bathrooms  
2,906 Sq. Ft.

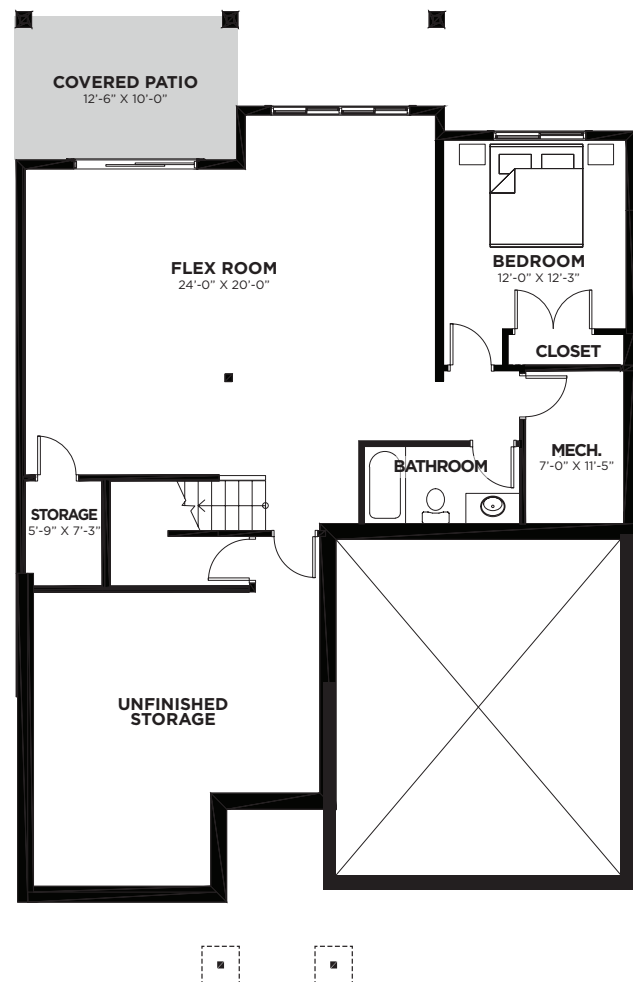
## ENTRY LEVEL

Total floorspace 1,478 Sq. Ft.  
Garage 450 Sq. Ft.



## LOWER LEVEL

Total floorspace 1,428 Sq. Ft.  
Finished basement



Parkbridge Lifestyle Inc. makes no warranty or representation, expressed or implied, concerning the accuracy or completeness of the information contained within. This is not an offer to sell, nor an offer to buy, to residents of any province or state in which registration or other legal requirements have not been fulfilled. Features, amenities and floorplan specifications represent the builder's current concepts and plans and are subject to change without notice. Substitution of materials shall be of equal or greater value. Actual usable floor space may vary from stated floor area. E. & O. E.



# Andromeda

3 Bedrooms • 2.5 Bathrooms  
1,837 Sq. Ft.



A three-storey detached home, Andromeda offers a traditional layout with two private balconies, a spacious walk-in pantry, and a den. The open concept main floor is the perfect entertaining space, with a beautiful kitchen and living room opening right onto your covered deck. Residential lift is also included in selected lot.



1631 Summer Crescent Kelowna, BC V1P 1T2  
SolsticeSales@parkbridge.com  
250-491-3353

**SolsticeTowerRanch.com**



Parkbridge Lifestyle Communities Inc. makes no warranty or representation, expressed or implied, concerning the accuracy or completeness of the information contained within. This is not an offer to sell, nor an offer to buy, to residents of any province or state in which registration or other legal requirements have not been fulfilled. Features, amenities and floorplan specifications represent the builder's current concepts and plans and are subject to change without notice. Substitution of materials shall be of equal or greater value. Actual usable floor space may vary from stated floor area. E. & O. E.

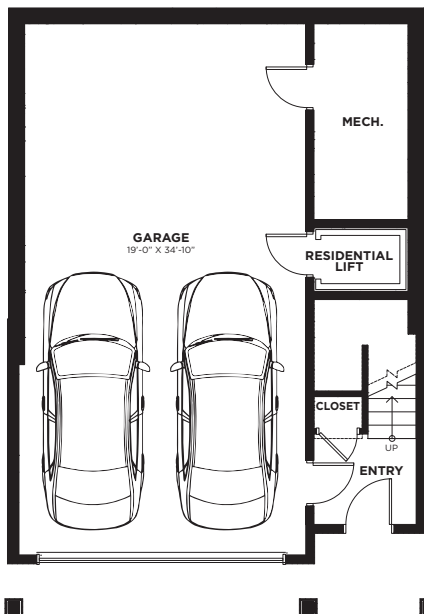
2023.07.18

# Andromeda

3 Bedrooms • 2.5 Bathrooms  
1,837 Sq. Ft.

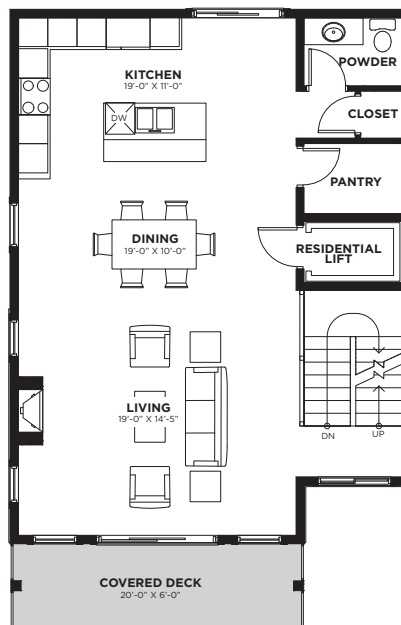
## ENTRY LEVEL

Total floorspace 125 Sq. Ft.  
Garage 852 Sq. Ft.



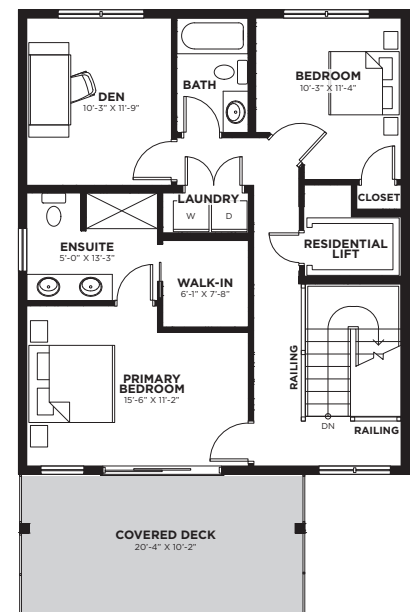
## MIDDLE LEVEL

Total floorspace 896 Sq. Ft.  
Excluding stairs



## UPPER LEVEL

Total floorspace 816 Sq. Ft.





# Cassiopeia

3 Bedrooms • 2.5 Bathrooms  
1,823 Sq. Ft.

(Exterior Model)



Rendering is artist's concept

A unique townhome unit with contemporary style, Cassiopeia is a three-storey home with residential lift. All units include two covered balconies, the views from your third-floor living space are spectacular. Residential lift is also included in all units.



1631 Summer Crescent Kelowna, BC V1P 1T2  
SolsticeSales@parkbridge.com  
250-491-3353

**SolsticeTowerRanch.com**

**pma brethour**  
PMA BRETHOUR REALTY GROUP BROKERAGE

Parkbridge Lifestyle Communities Inc. makes no warranty or representation, expressed or implied, concerning the accuracy or completeness of the information contained within. This is not an offer to sell, nor an offer to buy, to residents of any province or state in which registration or other legal requirements have not been fulfilled. Features, amenities and floorplan specifications represent the builder's current concepts and plans and are subject to change without notice. Substitution of materials shall be of equal or greater value. Actual usable floor space may vary from stated floor area. E. & O. E.

2023.07.18

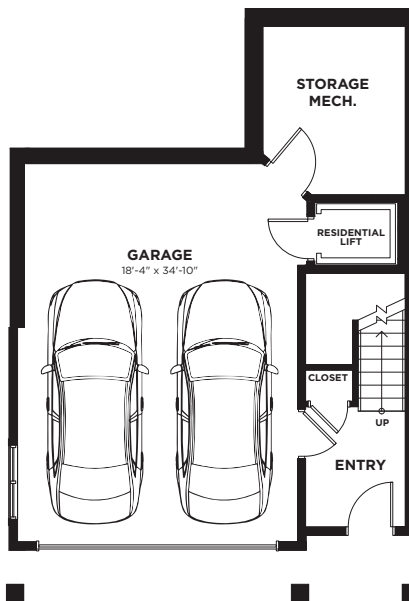
# Cassiopeia

3 Bedrooms • 2.5 Bathrooms  
1,823 Sq. Ft.

(Exterior Model)

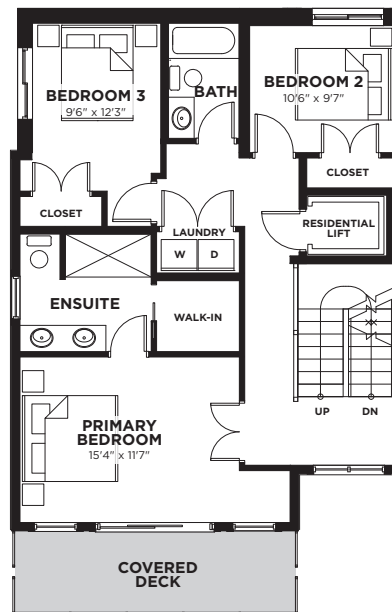
## ENTRY LEVEL

Total floorspace 124 Sq. Ft.  
Garage 474 Sq. Ft.



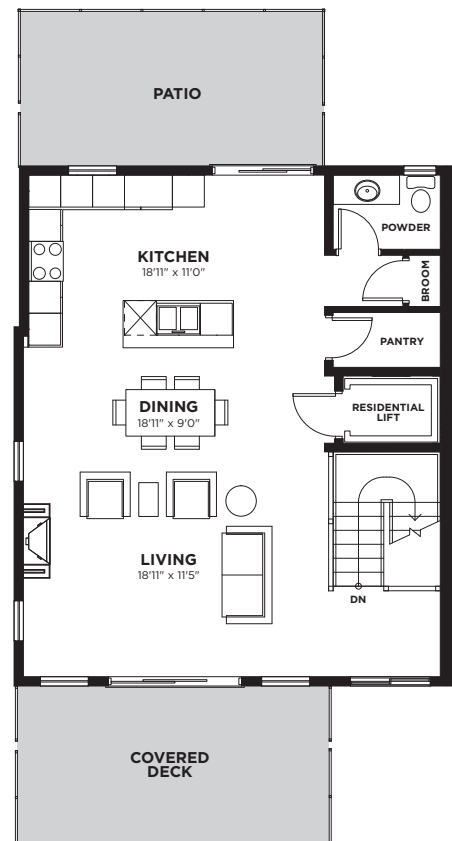
## MIDDLE LEVEL

Total floorspace 889 Sq. Ft.  
Excluding stairs



## UPPER LEVEL

Total floorspace 810 Sq. Ft.  
Excluding stairs



Parkbridge Lifestyle Communities Inc. makes no warranty or representation, expressed or implied, concerning the accuracy or completeness of the information contained within. This is not an offer to sell, nor an offer to buy, to residents of any province or state in which registration or other legal requirements have not been fulfilled. Features, amenities and floorplan specifications represent the builder's current concepts and plans and are subject to change without notice. Substitution of materials shall be of equal or greater value. Actual usable floor space may vary from stated floor area. E. & O. E.

2023.07.18



# Cassiopeia

3 Bedrooms • 2.5 Bathrooms  
1,829 Sq. Ft.

(Interior Model)



A unique townhome unit with contemporary style, Cassiopeia is a three-storey home with residential lift. All units include two covered balconies, the views from your third-floor living space are spectacular. Residential lift is also included in all units.



1631 Summer Crescent Kelowna, BC V1P 1T2  
SolsticeSales@parkbridge.com  
250-491-3353

**SolsticeTowerRanch.com**

**pma**brethour  
PMA BRETHOUR REALTY GROUP BROKERAGE

Parkbridge Lifestyle Communities Inc. makes no warranty or representation, expressed or implied, concerning the accuracy or completeness of the information contained within. This is not an offer to sell, nor an offer to buy, to residents of any province or state in which registration or other legal requirements have not been fulfilled. Features, amenities and floorplan specifications represent the builder's current concepts and plans and are subject to change without notice. Substitution of materials shall be of equal or greater value. Actual usable floor space may vary from stated floor area. E. & O. E.

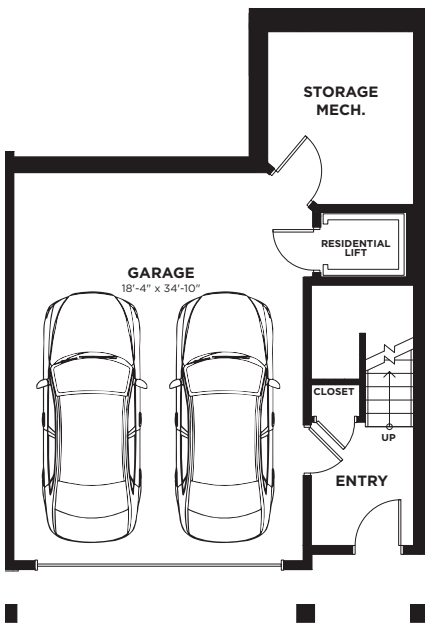
2023.07.18

# Cassiopeia

3 Bedrooms • 2.5 Bathrooms  
1,829 Sq. Ft.  
(Interior Model)

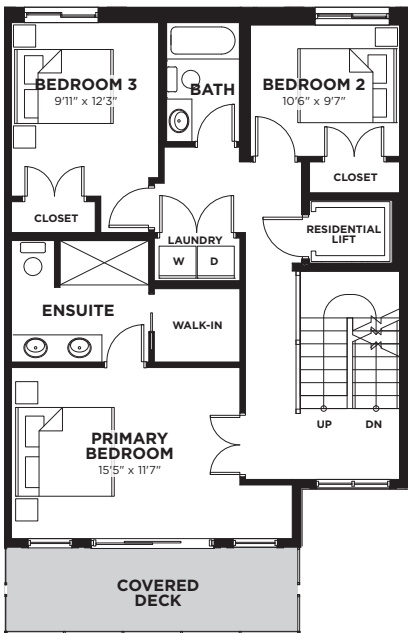
## ENTRY LEVEL

Living 124 Sq. Ft.  
Garage 482 Sq. Ft.



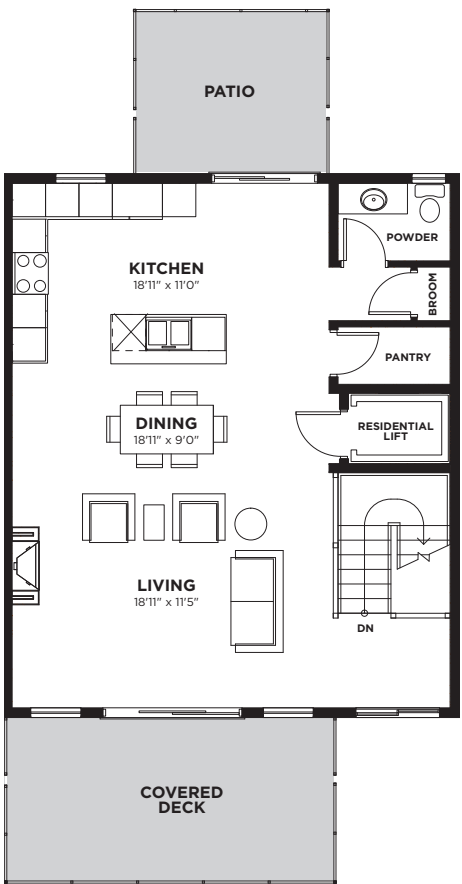
## MIDDLE LEVEL

Total floorspace 892 Sq. Ft.



## UPPER LEVEL

Total floorspace 813 Sq. Ft.  
Excluding stairs



Parkbridge Lifestyle Communities Inc. makes no warranty or representation, expressed or implied, concerning the accuracy or completeness of the information contained within. This is not an offer to sell, nor an offer to buy, to residents of any province or state in which registration or other legal requirements have not been fulfilled. Features, amenities and floorplan specifications represent the builder's current concepts and plans and are subject to change without notice. Substitution of materials shall be of equal or greater value. Actual usable floor space may vary from stated floor area. E. & O. E.