

# Cassiopeia

EXTERIOR MODEL

3 Bedrooms • 2.5 Bathrooms  
1,823 Sq. Ft.



Rendering is artist's concept

A stylish contemporary townhome, Cassiopeia is a three-storey home with its own residential elevator to make your home more accessible than ever.

An incredible top floor kitchen includes a walk-in pantry and spacious island, with spectacular views of the valley creating the perfect open concept entertaining space. A two car garage offers ample space for your vehicles or golf cart. And with three bedrooms including a spacious Primary Suite, there's space for everyone to enjoy. It's all about comfort, convenience, and style.



1631 Summer Crescent Kelowna, BC V1P 1T2  
SolsticeSales@parkbridge.com  
250-491-3353

**SolsticeTowerRanch.com**

\*Parkbridge Lifestyle Communities Inc. makes no warranty or representation, expressed or implied, concerning the accuracy or completeness of the information contained within. This is not an offer to sell, nor an offer to buy, to residents of any province or state in which registration or other legal requirements have not been fulfilled. Prices, features, amenities and floorplan specifications represent the builder's current concepts and plans and are subject to change without notice. Substitution of materials shall be of equal or greater value. Actual usable floor space may vary from stated floor area. Brokers protected. Exclusive Listing Brokerage: PMA Brethour Realty Group and Century 21 Assurance Realty Ltd. E. & O. E.

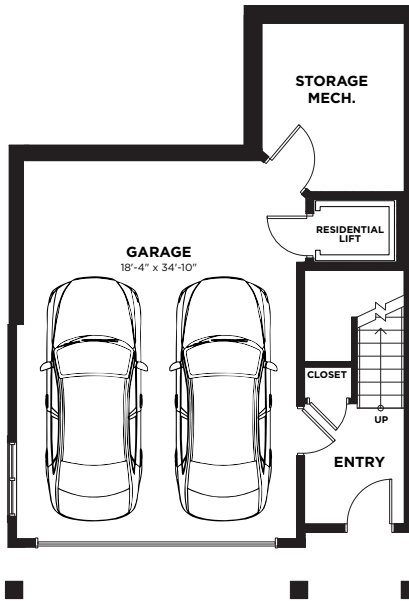
# Cassiopeia

EXTERIOR MODEL

3 Bedrooms • 2.5 Bathrooms  
1,823 Sq. Ft.

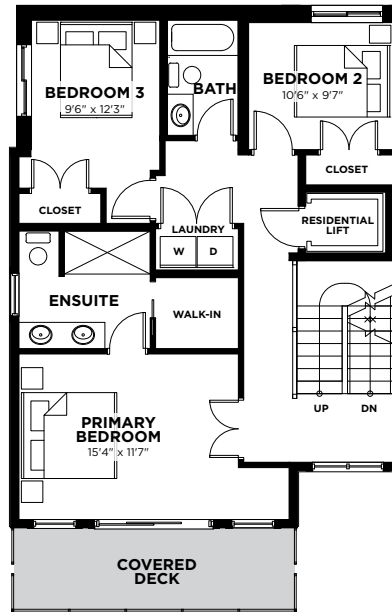
## ENTRY LEVEL

Total floorspace 124 Sq. Ft.  
Garage 474 Sq. Ft.



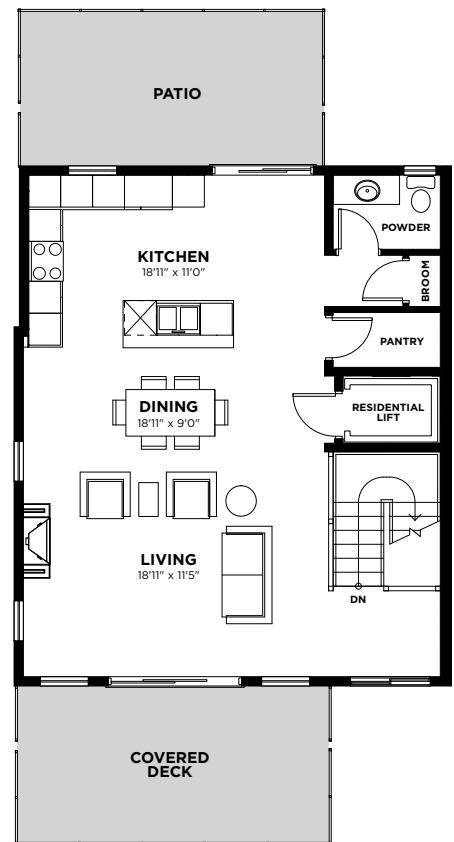
## MIDDLE LEVEL

Total floorspace 889 Sq. Ft.  
Excluding stairs



## UPPER LEVEL

Total floorspace 810 Sq. Ft.  
Excluding stairs



\*Parkbridge Lifestyle Communities Inc. makes no warranty or representation, expressed or implied, concerning the accuracy or completeness of the information contained within. This is not an offer to sell, nor an offer to buy, to residents of any province or state in which registration or other legal requirements have not been fulfilled. Prices, features, amenities and floorplan specifications represent the builder's current concepts and plans and are subject to change without notice. Substitution of materials shall be of equal or greater value. Actual usable floor space may vary from stated floor area. Brokers protected. Exclusive Listing Brokerage: PMA Brethour Realty Group and Century 21 Assurance Realty Ltd. E. & O. E.

# Cassiopeia

INTERIOR MODEL

3 Bedrooms • 2.5 Bathrooms  
1,829 Sq. Ft.



Rendering is artist's concept

A stylish contemporary townhome, Cassiopeia is a three-storey home with its own residential elevator to make your home more accessible than ever.

An incredible top floor kitchen includes a walk-in pantry and spacious island, with spectacular views of the valley creating the perfect open concept entertaining space. A two car garage offers ample space for your vehicles or golf cart. And with three bedrooms including a spacious Primary Suite, there's space for everyone to enjoy. It's all about comfort, convenience, and style.



1631 Summer Crescent Kelowna, BC V1P 1T2  
SolsticeSales@parkbridge.com  
250-491-3353

**SolsticeTowerRanch.com**

\*Parkbridge Lifestyle Communities Inc. makes no warranty or representation, expressed or implied, concerning the accuracy or completeness of the information contained within. This is not an offer to sell, nor an offer to buy, to residents of any province or state in which registration or other legal requirements have not been fulfilled. Prices, features, amenities and floorplan specifications represent the builder's current concepts and plans and are subject to change without notice. Substitution of materials shall be of equal or greater value. Actual usable floor space may vary from stated floor area. Brokers protected. Exclusive Listing Brokerage: PMA Brethour Realty Group and Century 21 Assurance Realty Ltd. E. & O. E.

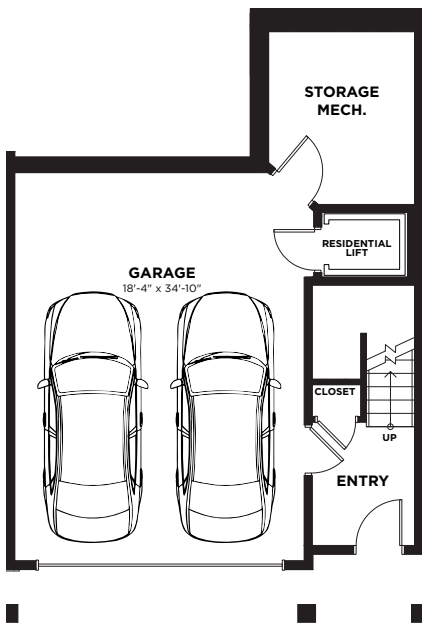
# Cassiopeia

INTERIOR MODEL

3 Bedrooms • 2.5 Bathrooms  
1,829 Sq. Ft.

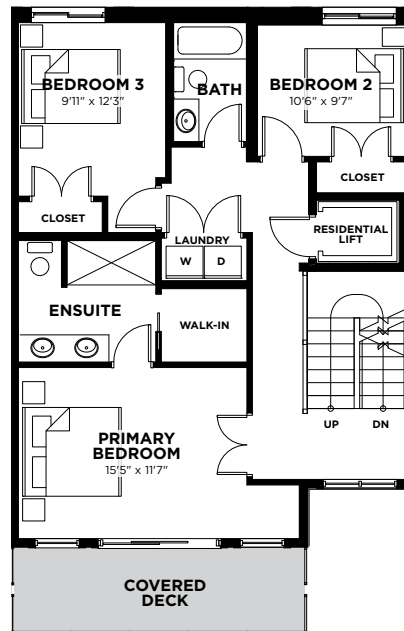
## ENTRY LEVEL

Living 124 Sq. Ft.  
Garage 482 Sq. Ft.



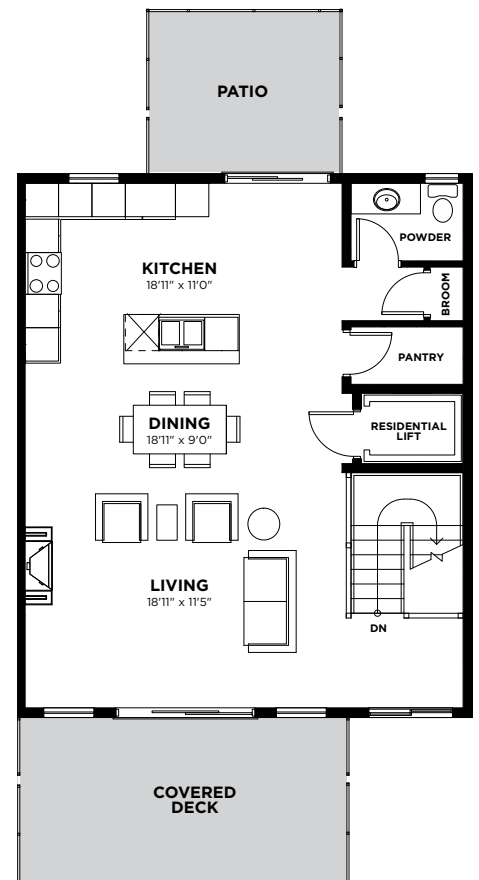
## MIDDLE LEVEL

Total floorspace 892 Sq. Ft.



## UPPER LEVEL

Total floorspace 813 Sq. Ft.  
Excluding stairs



\*Parkbridge Lifestyle Communities Inc. makes no warranty or representation, expressed or implied, concerning the accuracy or completeness of the information contained within. This is not an offer to sell, nor an offer to buy, to residents of any province or state in which registration or other legal requirements have not been fulfilled. Prices, features, amenities and floorplan specifications represent the builder's current concepts and plans and are subject to change without notice. Substitution of materials shall be of equal or greater value. Actual usable floor space may vary from stated floor area. Brokers protected. Exclusive Listing Brokerage: PMA Brethour Realty Group and Century 21 Assurance Realty Ltd. E. & O. E.