

# Leo II

VERSION A

2 Bedrooms • 2.5 Bathrooms  
1,861 Sq. Ft.



A cozy bungalow, Leo II is the perfect low maintenance home to relax and enjoy, offering captivating views of the Okanagan Valley and lush golf courses. Bright windows fill your living room with light, leading into an open concept kitchen and dining room perfect for every occasion.

Your laundry room opens onto the double car garage, making the perfect place for gear after your latest adventure. And with a beautiful patio and an optional finished basement providing a guest suite and/or rec room, the opportunities are limitless.



**SOLSTICE**  
AT TOWER RANCH

1416 Tower Ranch Drive, Kelowna, BC V1P 1T8 (Lot 143)

SolsticeSales@parkbridge.com

250-491-3353

**SolsticeTowerRanch.com**

\*Parkbridge Lifestyle Communities Inc. makes no warranty or representation, expressed or implied, concerning the accuracy or completeness of the information contained within. This is not an offer to sell, nor an offer to buy, to residents of any province or state in which registration or other legal requirements have not been fulfilled. Prices, features, amenities and floor plan specifications represent the builder's current concepts and plans and are subject to change without notice. Substitution of materials shall be of equal or greater value. Actual usable floor space may vary from stated floor area.  
Brokers protected. Exclusive Listing Brokerage: PMA Brethour Realty Group and Century 21 Assurance Realty Ltd. E. & O. E.

STR 2024.07.22

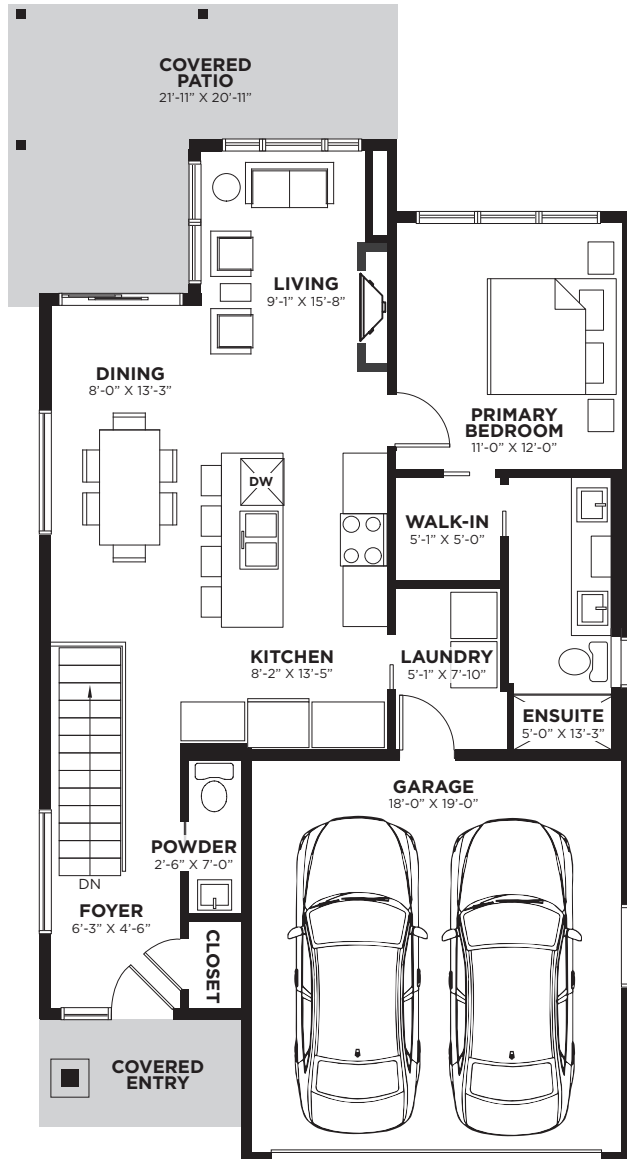
# Leo II

VERSION A

2 Bedrooms • 2.5 Bathrooms  
1,861 Sq. Ft.

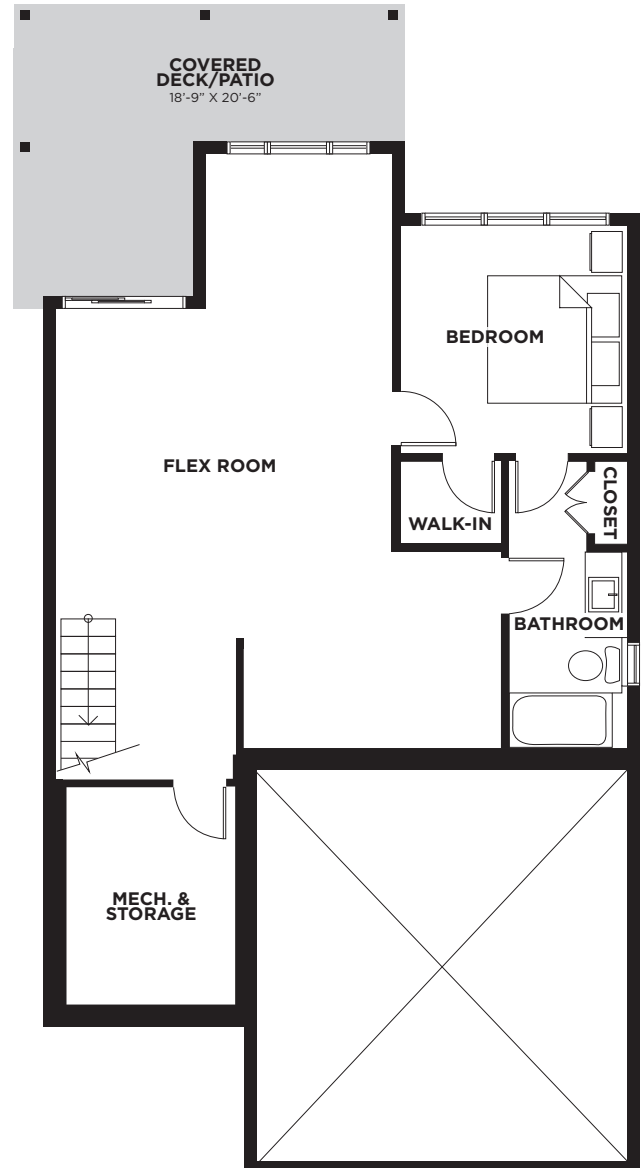
## ENTRY LEVEL

Total floorspace 887 Sq. Ft.  
Garage 383 Sq. Ft.



## LOWER LEVEL

Total floorspace 974 Sq. Ft.  
Finished basement



\*Parkbridge Lifestyle Communities Inc. makes no warranty or representation, expressed or implied, concerning the accuracy or completeness of the information contained within. This is not an offer to sell, nor an offer to buy, to residents of any province or state in which registration or other legal requirements have not been fulfilled. Prices, features, amenities and floor plan specifications represent the builder's current concepts and plans and are subject to change without notice. Substitution of materials shall be of equal or greater value. Actual usable floor space may vary from stated floor area.  
Brokers protected. Exclusive Listing Brokerage: PMA Brethour Realty Group and Century 21 Assurance Realty Ltd. E. & O. E.



# Leo II

VERSION B

2 Bedrooms • 2.5 Bathrooms  
1,849 Sq. Ft.



A cozy bungalow, Leo II is the perfect low maintenance home to relax and enjoy, offering captivating views of the Okanagan Valley and lush golf courses. Bright windows fill your living room with light, leading into an open concept kitchen and dining room perfect for every occasion.

Your laundry room opens onto the double car garage, making the perfect place for gear after your latest adventure. And with a beautiful patio and an optional finished basement providing a guest suite and/or rec room, the opportunities are limitless.



**SOLSTICE**  
AT TOWER RANCH

1416 Tower Ranch Drive, Kelowna, BC V1P 1T8 (Lot 143)

SolsticeSales@parkbridge.com

250-491-3353

**SolsticeTowerRanch.com**

\*Parkbridge Lifestyle Communities Inc. makes no warranty or representation, expressed or implied, concerning the accuracy or completeness of the information contained within. This is not an offer to sell, nor an offer to buy, to residents of any province or state in which registration or other legal requirements have not been fulfilled. Prices, features, amenities and floor plan specifications represent the builder's current concepts and plans and are subject to change without notice. Substitution of materials shall be of equal or greater value. Actual usable floor space may vary from stated floor area.  
Brokers protected. Exclusive Listing Brokerage: PMA Brethour Realty Group and Century 21 Assurance Realty Ltd. E. & O. E.

STR 2024.07.22

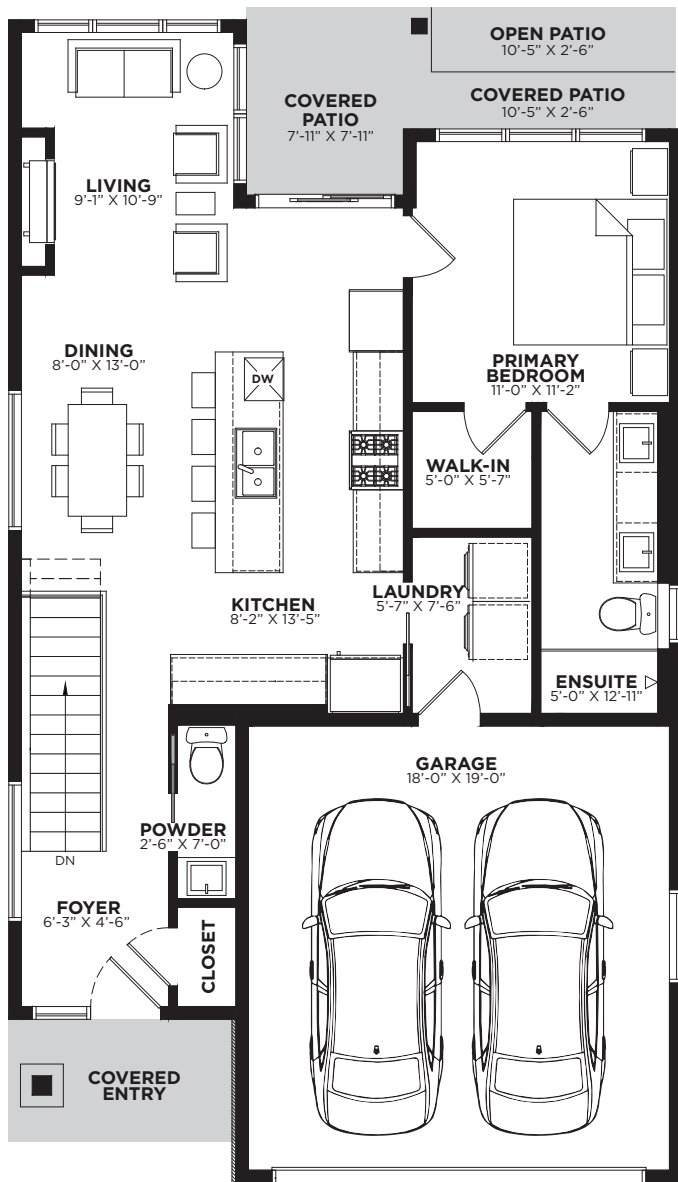
# Leo II

VERSION B

2 Bedrooms • 2.5 Bathrooms  
1,849 Sq. Ft.

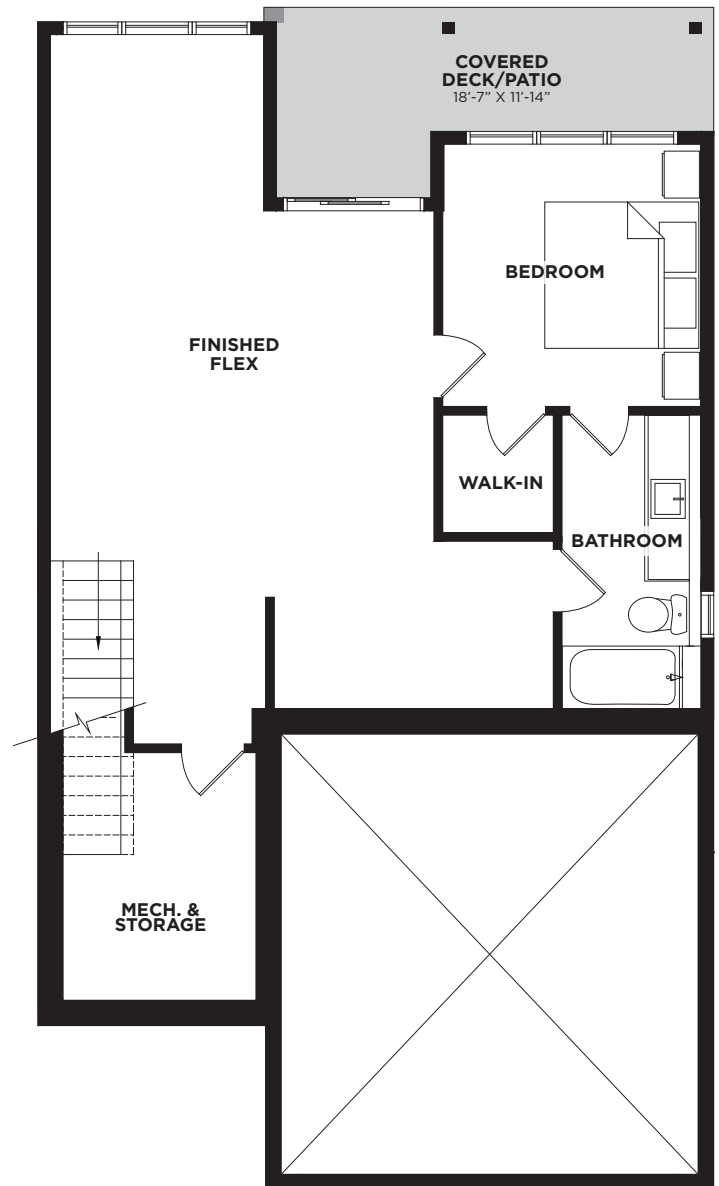
## ENTRY LEVEL

Total floorspace 875 Sq. Ft.  
Garage 383 Sq. Ft.



## LOWER LEVEL

Total floorspace 974 Sq. Ft.  
Finished basement



\*Parkbridge Lifestyle Communities Inc. makes no warranty or representation, expressed or implied, concerning the accuracy or completeness of the information contained within. This is not an offer to sell, nor an offer to buy, to residents of any province or state in which registration or other legal requirements have not been fulfilled. Prices, features, amenities and floor plan specifications represent the builder's current concepts and plans and are subject to change without notice. Substitution of materials shall be of equal or greater value. Actual usable floor space may vary from stated floor area.  
Brokers protected. Exclusive Listing Brokerage: PMA Brethour Realty Group and Century 21 Assurance Realty Ltd. E. & O. E.



# Leo II

VERSION B WITH UNFINISHED BASEMENT

**1 Bedroom • 1.5 Bathrooms  
875 + 974 Sq. Ft. Bonus Room**



A cozy bungalow, Leo II is the perfect low maintenance home to relax and enjoy, offering captivating views of the Okanagan Valley and lush golf courses. Bright windows fill your living room with light, leading into an open concept kitchen and dining room perfect for every occasion.

Your laundry room opens onto the double car garage, making the perfect place for gear after your latest adventure. And with a beautiful patio and an optional finished basement providing a guest suite and/or rec room, the opportunities are limitless.



**SOLSTICE**  
AT TOWER RANCH

1416 Tower Ranch Drive, Kelowna, BC V1P 1T8 (Lot 143)

SolsticeSales@parkbridge.com

250-491-3353

**SolsticeTowerRanch.com**

\*Parkbridge Lifestyle Communities Inc. makes no warranty or representation, expressed or implied, concerning the accuracy or completeness of the information contained within. This is not an offer to sell, nor an offer to buy, to residents of any province or state in which registration or other legal requirements have not been fulfilled. Prices, features, amenities and floor plan specifications represent the builder's current concepts and plans and are subject to change without notice. Substitution of materials shall be of equal or greater value. Actual usable floor space may vary from stated floor area.  
Brokers protected. Exclusive Listing Brokerage: PMA Brethour Realty Group and Century 21 Assurance Realty Ltd. E. & O. E.

STR 2024.07.22

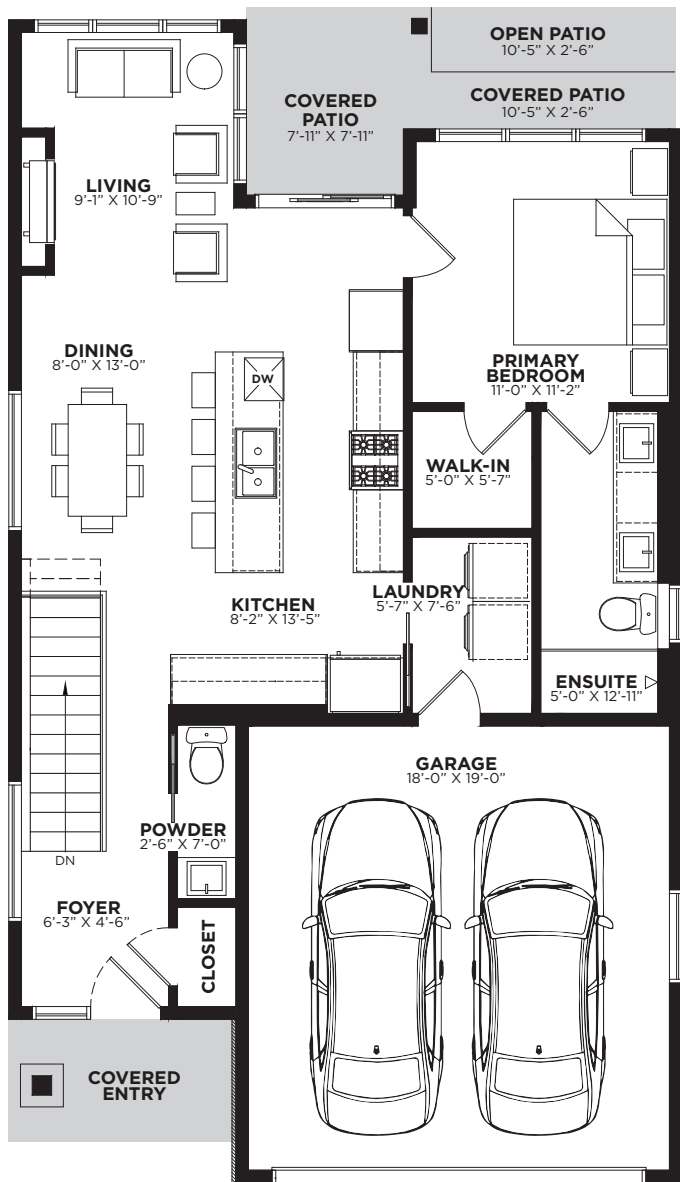
# Leo II

VERSION B WITH UNFINISHED BASEMENT

1 Bedroom • 1.5 Bathrooms  
875 + 974 Sq. Ft. Bonus Room

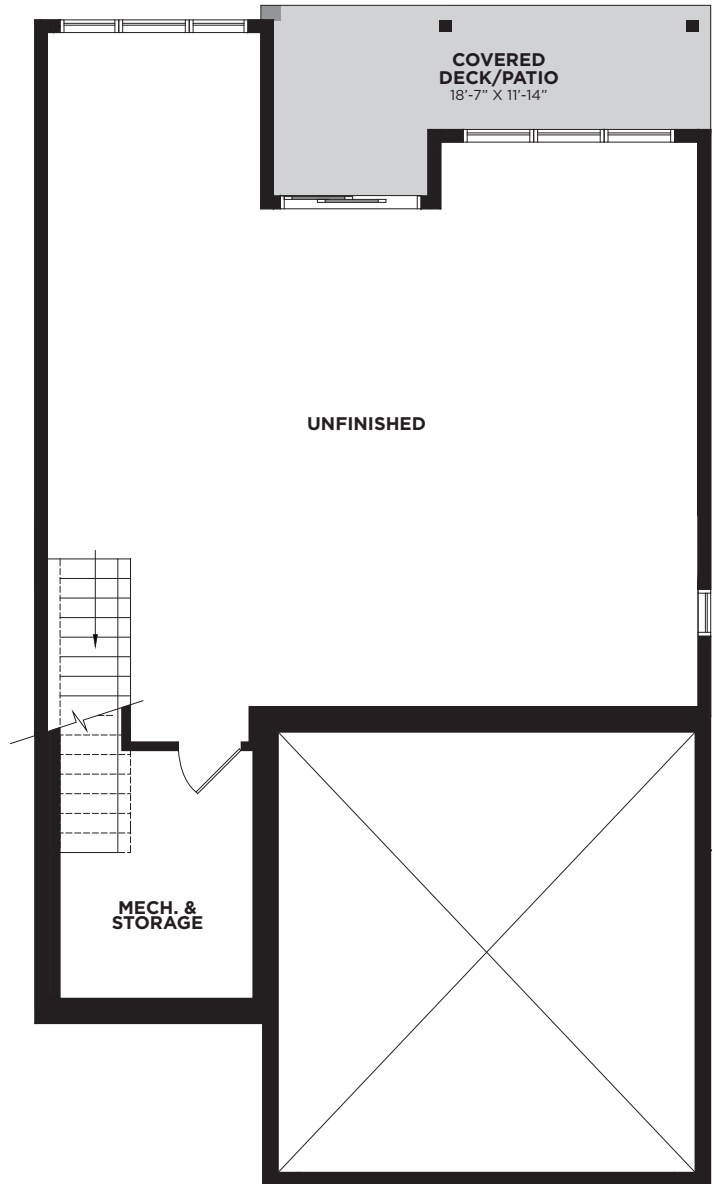
## ENTRY LEVEL

Total floorspace 875 Sq. Ft.  
Garage 383 Sq. Ft.



## LOWER LEVEL

Total floorspace 974 Sq. Ft.  
Unfinished basement



\*Parkbridge Lifestyle Communities Inc. makes no warranty or representation, expressed or implied, concerning the accuracy or completeness of the information contained within. This is not an offer to sell, nor an offer to buy, to residents of any province or state in which registration or other legal requirements have not been fulfilled. Prices, features, amenities and floor plan specifications represent the builder's current concepts and plans and are subject to change without notice. Substitution of materials shall be of equal or greater value. Actual usable floor space may vary from stated floor area.  
Brokers protected. Exclusive Listing Brokerage: PMA Brethour Realty Group and Century 21 Assurance Realty Ltd. E. & O. E.